

GENERATORS, SIGNS, TRACTOR/SHOP MANUALS, EX. EQUIPMENT
 Generac Ultra service 15,000-watt elec start generator 30 HP;
 4000-watt 8 HP generator; new 2" trash pump; several new
 Vitamaster ex. bikes; treadmills; old farm literature and manuals;
 Ford watches; key chains; Ford and New Holland signs; BilJac sign;
 Bolens, Hustler; Ven-trac signs; Ford farm and industrial tractor
 posters; file cabinet; radio; boomer key chains and T-shot; NH flags;
 new signs; etc.

ONSITE TERMS

Driver's license or State ID required to register for bidder number.
 Cash, Check, Debit Card, Visa, or Master Card accepted. 4% buyer's
 premium on all sales; 4% waived for cash or check when paid sale
 day. Information is believed to be accurate but not guaranteed. Multi
 Par auction process may be used.

ONLINE TERMS

Visa, MasterCard & Wire Transfer accepted. Wire Transfer or Certified
 Check required on purchases totaling \$3,000 or greater. 10% buyer's
 premium on all sales. Information is believed to be accurate but not
 guaranteed. Multi par auction process may be used.



ABSOLUTE AUCTION

SATURDAY, SEPTEMBER 21, 2024, 10:00 AM
 REAL ESTATE SELLS AT 11:00 AM





RANDALL L. KIKO
 AUCTIONEER/REALTOR
 330.831.0174
 randallkiko@kikocompany.com



RUSSELL T. (RUSTY) KIKO, JR.
 AUCTIONEER/REALTOR
 330.495.0923
 rustykiko@kikocompany.com

OUTSTANDING REAL ESTATE OPPORTUNITY



1960 ST. RT. 14,
 DEERFIELD, OH 44411

Information is believed to be accurate but not guaranteed.
 KIKO Auctioneers



www.kikoauctions.com | 800.533.5456

ONLINE BIDDING AVAILABLE ON REAL ESTATE & SELECT ITEMS

- AUCTION HIGHLIGHTS**
- 5.04 Acres With 40 X 64 Pole Building New In 2022
 - 36 X 53 Heated Shop With Office Plus 30 X 48 Building
 - Partly Fenced In With Large Gravel Parking Lot
 - Frontage On Two Roads

- Also Selling Description:**
- Mack & Ford Dump Trucks
 - New Holland, Ford, AC & Power King Tractors
 - Alum. Hopper Bottom, Trailers
 - Shop & Specialty Tools



Scan for auction details, including directions.

*Absolute Auction.
 All sells to the highest bidders on location.*

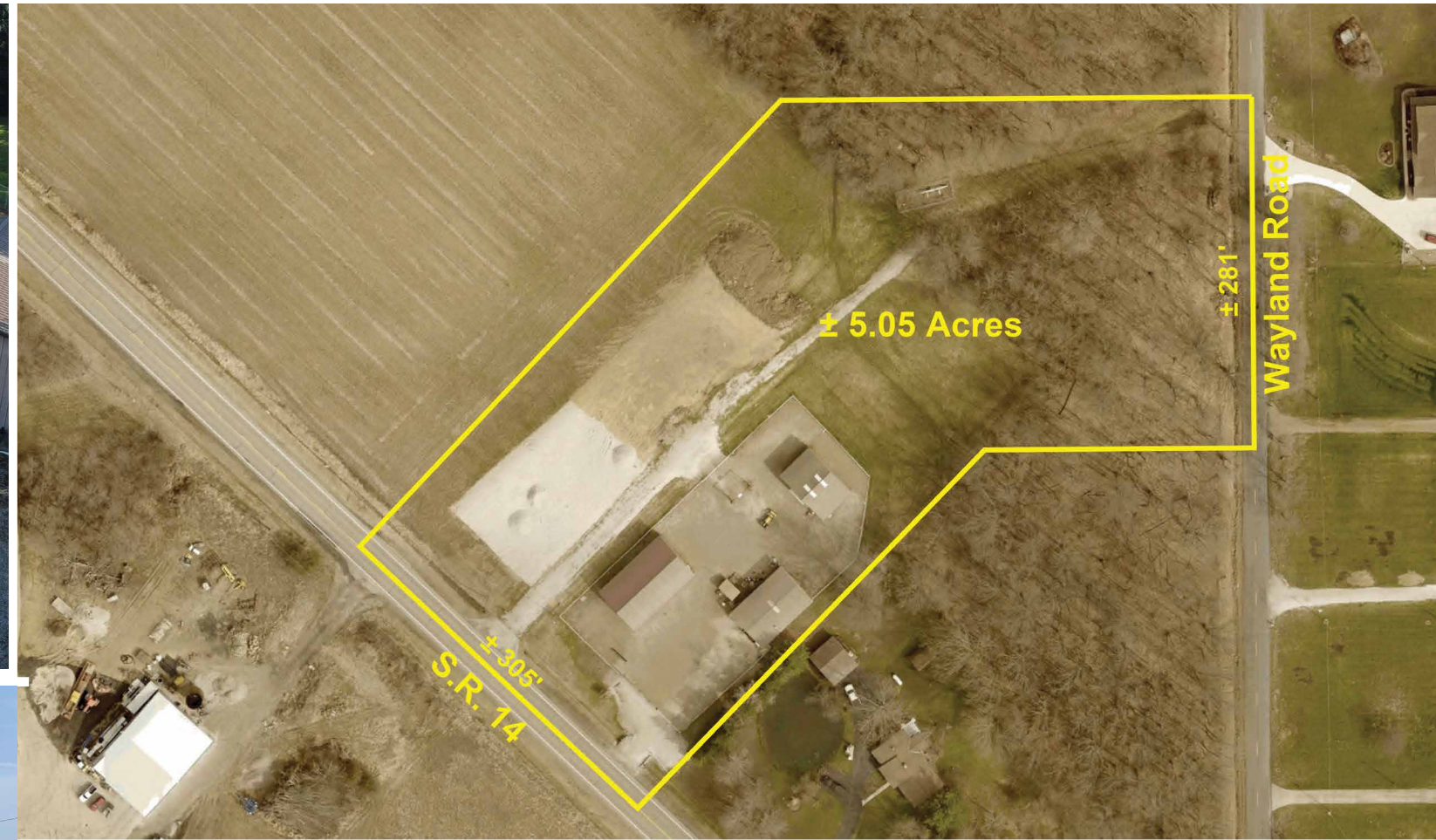
PREVIEW: FRIDAY, SEPTEMBER 20, 2024, 2:30-5:30 PM

REAL ESTATE

5.04 acres with high traffic count and good road exposure. 40 X 64 pole building with concrete floors, (2) 16' W X 14' high doors 16' ceiling, new in 2022, 30 X 48 Morton building with concrete floor, insulated ceiling, 12'H X 20' door, 36 X 53 heated Morton building with concrete floor, small overhead hoist, free gas heat, 12' door and office. All buildings are fenced in with gravel parking area. Large additional parking lot with 12" base. Frontage on two roads with two access points. No zoning. Close to I-76, 30 minutes to Akron & Youngstown. Buildings are in great shape and all have electric. Call for private showing. Loads of possibilities.

TERMS ON REAL ESTATE

10% down auction day, balance due at closing. A 10% buyer's premium will be added to the highest bid to establish the purchase price. Any desired inspections must be made prior to bidding. All information contained herein was derived from sources believed to be correct. Information is believed to be accurate but not guaranteed.



MACK & FORD DUMP TRUCKS, GOOSENECK TRAILERS, ALUM. HOPPER

Sharp 2006 Mack mod 713 granite tandem with 14' American CMSS steel dump body, double frame, air gate, auto greaser, elec. tarp; 1993 Mack mod 600 RD688S tandem dump truck, second owner with J&J 19.5; alum dump body 10 sp E-6 Mack engine 174,000 act miles elec tarp dble frame; 1994 F-700 Ford dump truck with 5.9 Cummins 10' Rogers steel dump 31,450 act miles 5 sp Hi/Lo; 1999 Wilson alum. 40' double hopper bottom with alum. wheels and tarp mod. DWH-400; 2004 Rolls Rite gooseneck trailer 20' & 5' with ramps and folding Beavertail 15K#; 2010 Golden trailer gooseneck 20' & 5' with ramps 14K#; homemade 10' landscape trailer with fold-down ramp; 2007 Atlas 20' enclosed box trailer with fold-down ramp

TRACTORS & PULLING TRACTORS, POWER KING, FORD

New Holland TC30 4WD tractor with NH QT 110TL loader 515 act hrs 3 pt PTO rops; 2001 New Holland 6610S diesel with boom-ax Alamo Industrial 5' arm mower approx. 17' boom dual remote PTO good 420/85R30 radials counterweight 4 sp Hi/Lo safety Case, rops; 1959 Ford 971 NF diesel selecto sp 13.6-28 rubber fenders 3 pt Independent PTO 2859 hrs possibly a gold Demo; Ford 960 5 sp NF with 950 stamped trans with 960 guts live PTO gas hyd.; Ford 960 NF gas 3 pt 5 sp 13.6-28 rubber; 1964 Ford 4000 Selecto sp NF 3 pt remotes gas 12V power steering; AC WD NF with rebuilt engine; Ford 6000 pulling tractor fiberglass nose cone straight 6 cyl with truck head 3500 RPM selecto sp 16.9-34 cut tires NF been sitting; Ford 8600 pulling tractor NF Weimer pump rops and canopy Mack truck injectors dual power PTO 3 pt arms Summit Racing Turbo 4" intake; Power King 1614 hyd 3 pt new tires front wheel weights; Power King 48" blade; Power King pull-type 4' mower with gas engine; Power King 3 pt tiller

HYSTER FORKLIFT, FORD TRACTOR PARTS & SPECIALTY FORD & NEW HOLLAND SHOP TOOLS & EQUIPMENT, SHOP TOOLS, COMPRESSOR

Hyster H25E propane forklift 2000K # double mast forklift 535 hrs; super sharp NH mod 77 square baler with Wisconsin V4 engine hydro formatic tension with original ser plate & books; Pittsburg 3 pt one-bottom plow; Ford 3 pt two-bottom plow; Oliver three-bottom trail plow with original Oliver moldboards; 5' 3 pt rotary mower; Ford 914 5' belly mower; Sno-way 10' wing snowblade; Ford 8N belt pulley 1 1/8" with adaptor hub to 1 3/8"; new loader remote value fits 70A-TL100A tractors; Ford WF fits 8000-9K tractor; 16.9-28 rad. tires; Ford 5000/7000 flat deck parts; Ford NF for 5000/7000 tractor; Ford seat; PS cyl, axle hubs, other Ford tractor parts; tack, hoses, tune up kits; Unverferth 32" centers with step up 38" rims; 32 X 26W rims for 5000 7000; several specialty Ford/New Holland shop tools pullers, clutch tools, valve compressor; bushing tools; Selctco sp. bar tools; injector tester; ring and pinion tools 2 crates full from 1950-2000; 1" Wright socket set; bench grinder; bolt bin; Quincy 5 HP 2 stage upright compressor; Ford 700/900 grill; GM chrome starter; Ford Hub cabs; DeWalt 12v tool; pole saw; pallet shelving; Millermatic 200 wire welder with tank; approx. 80 treated fence post; several feet 48" woven wire; Tillstar rototiller; shop cart with vise; workbench & vise; pipe wrenches; bolt cutters; Lincoln 225 welder; metal horz. bandsaw; platform scales; sev. walk-behind plows & lawn tools; Napa 230 arc welder with tank; hay harpoon with pulley; bolt cutters; T & G pine boards

